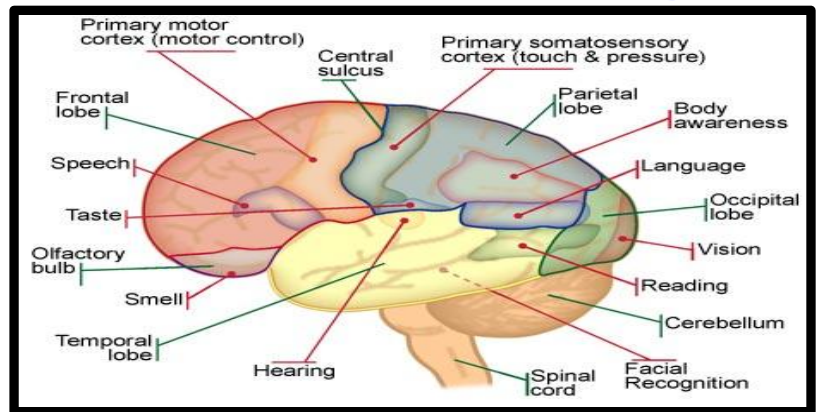


# Cerebral Palsy

## Brain Structure:



## Severity of CP:

**Hemiplegia**  
 One side of the body is affected. The arm is usually more involved than the leg

**Diplegia**  
 All four limbs are affected. Both legs are more affected than the arms.

**Quadriplegia**  
 All four limbs are involved.

**Monoplegia**  
 Only one limb is affected, usually an arm.

**Triplegia**  
 Three limbs are involved, usually both arms and a leg.

## Types of Treatment:



[http://www.taafonline.org/images/figure\\_8.jpg](http://www.taafonline.org/images/figure_8.jpg)

<http://regardinghorses.com/wp-content/uploads/2008/02/therapeutic-horseback-riding-for-cerebral-palsy.jpg>

[http://www.ofcp.ca/images/CP\\_type.gif](http://www.ofcp.ca/images/CP_type.gif)